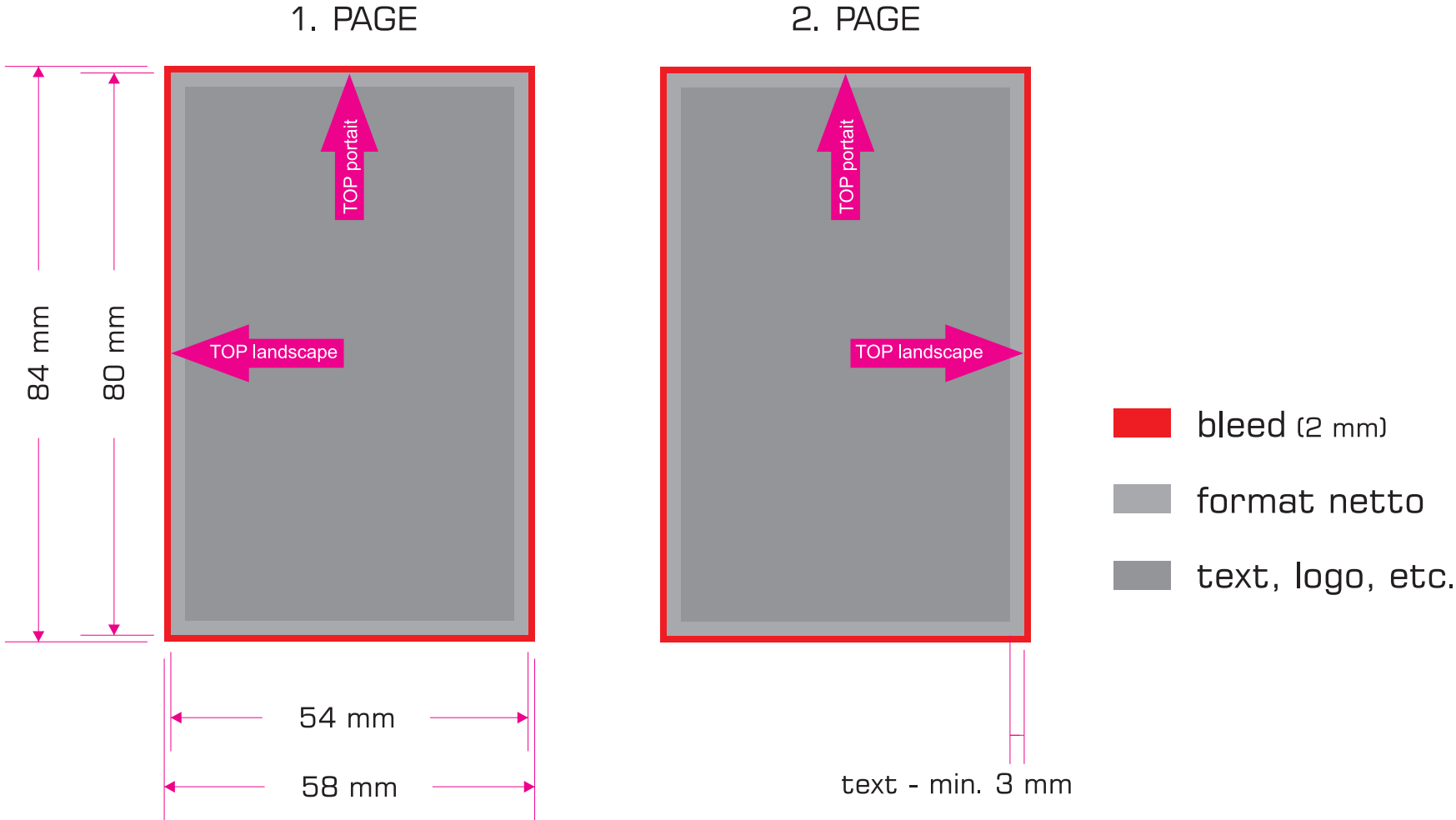
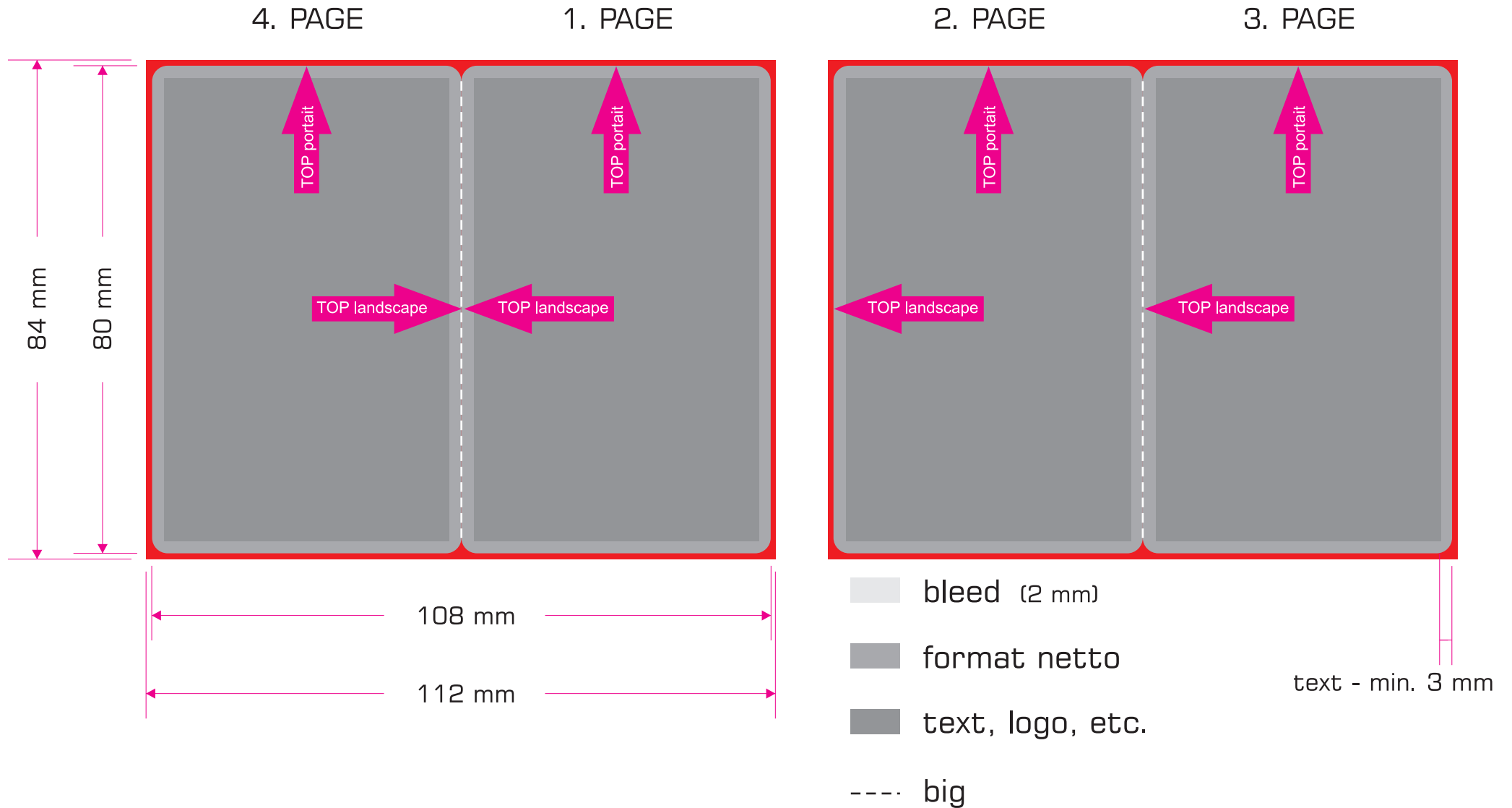


# REX•CARD



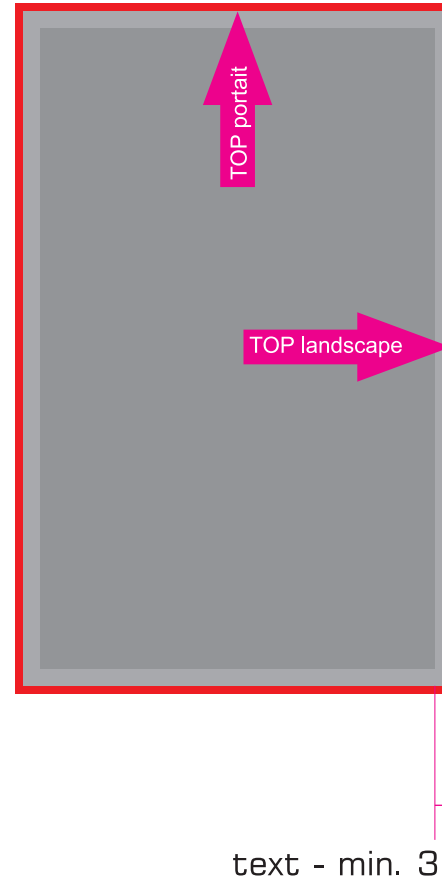
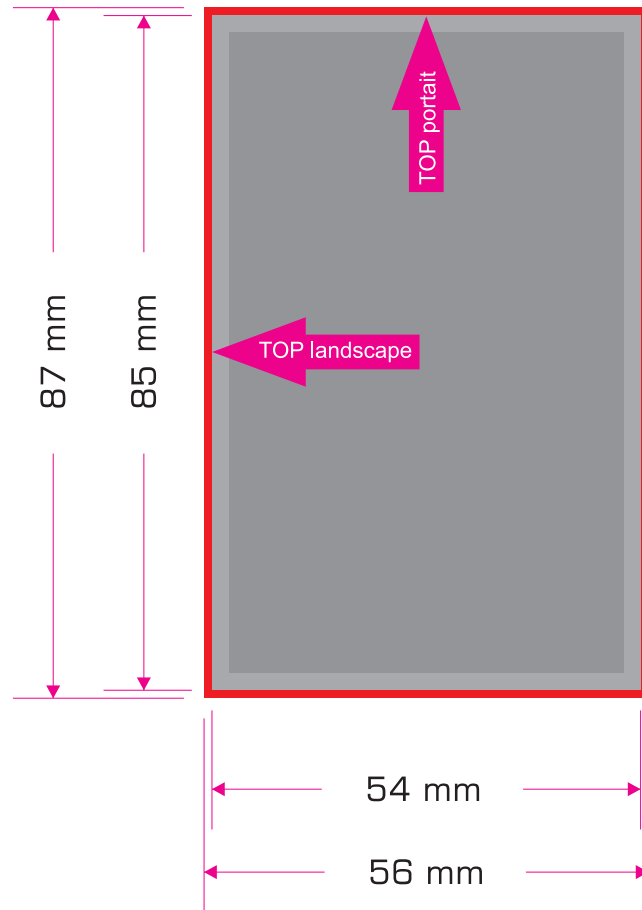
# REX·CARD\_duo






# REX•BUSINESS

1. PAGE

2. PAGE

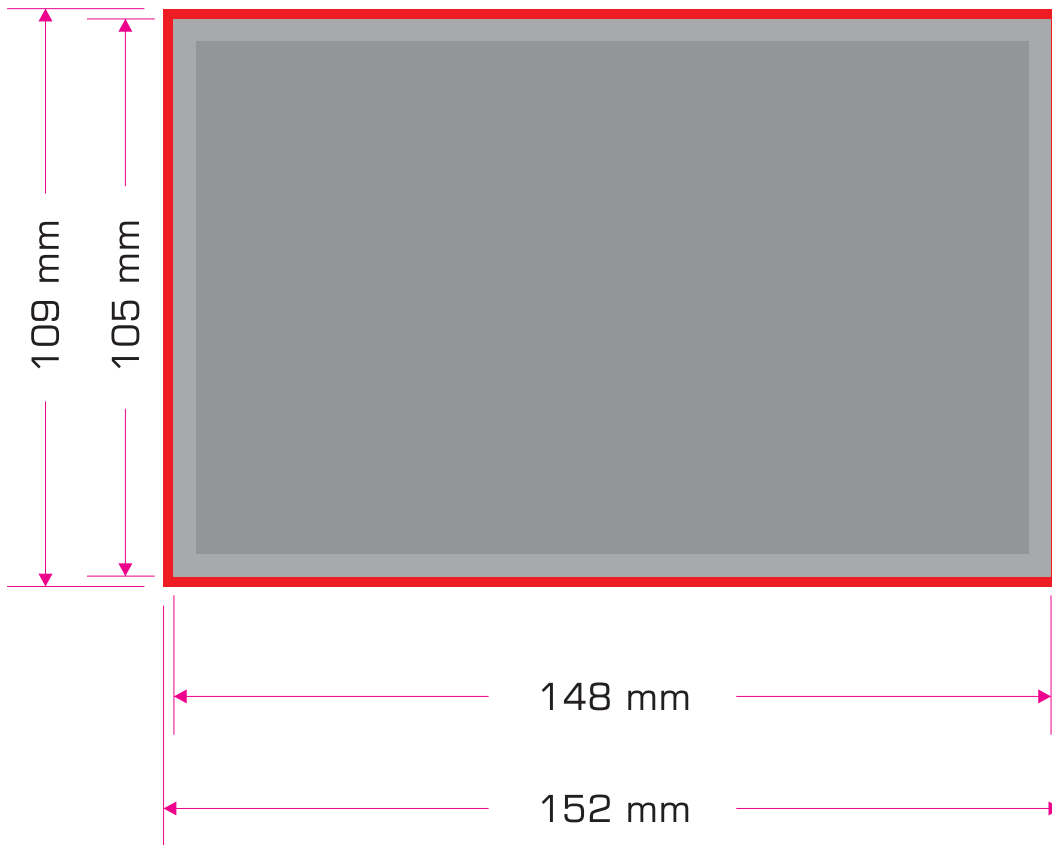





-  bleed (1 mm)
-  format netto
-  text, logo, etc.

# REX•POST

1. PAGE

2. PAGE

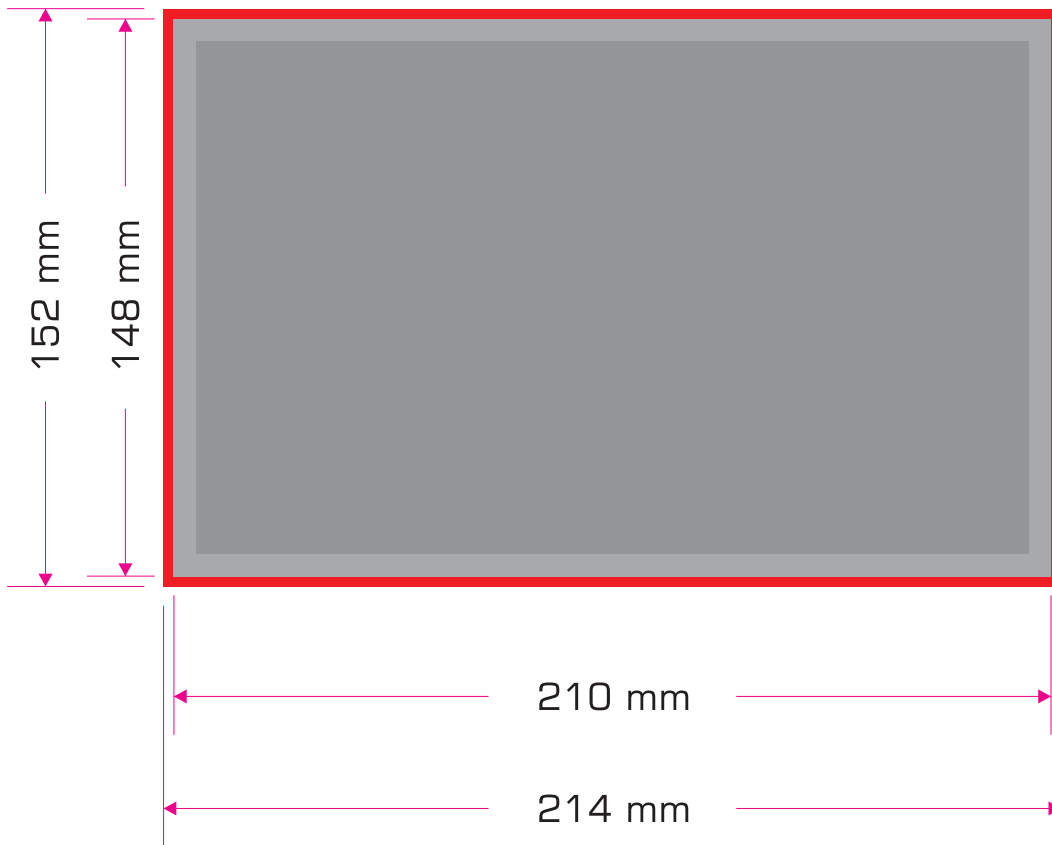





-  bleed (2 mm)
-  format netto
-  text, logo, etc.

# REX•POST\_A5

1. PAGE

2. PAGE

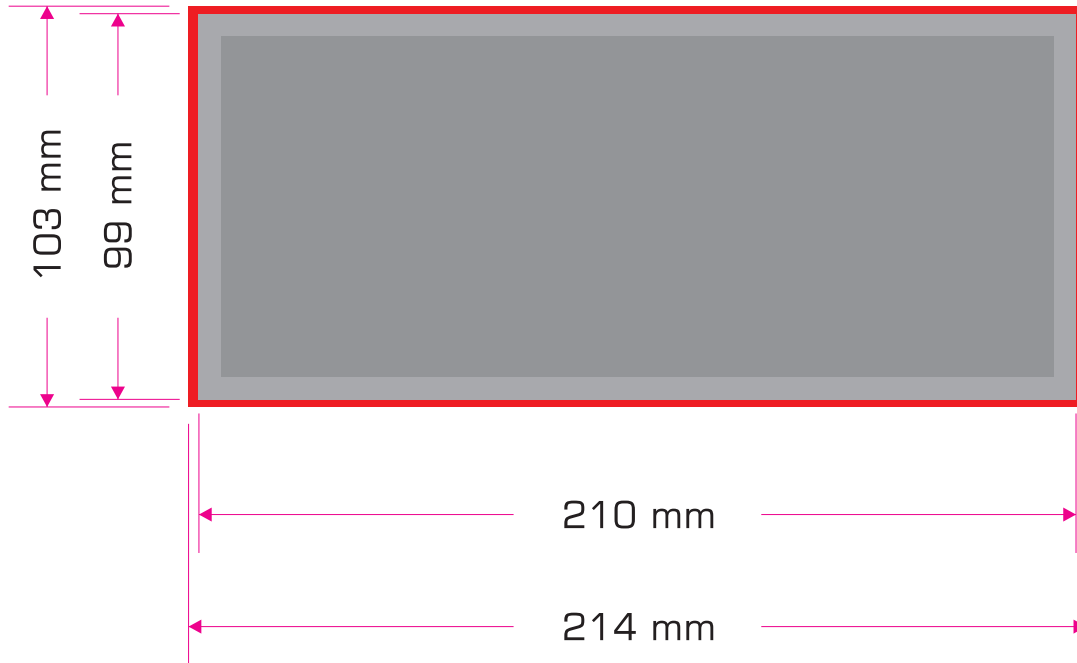



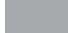

-  bleed (2 mm)
-  format netto
-  text, logo, etc.

# REX•POST\_1/3 A4

1. PAGE

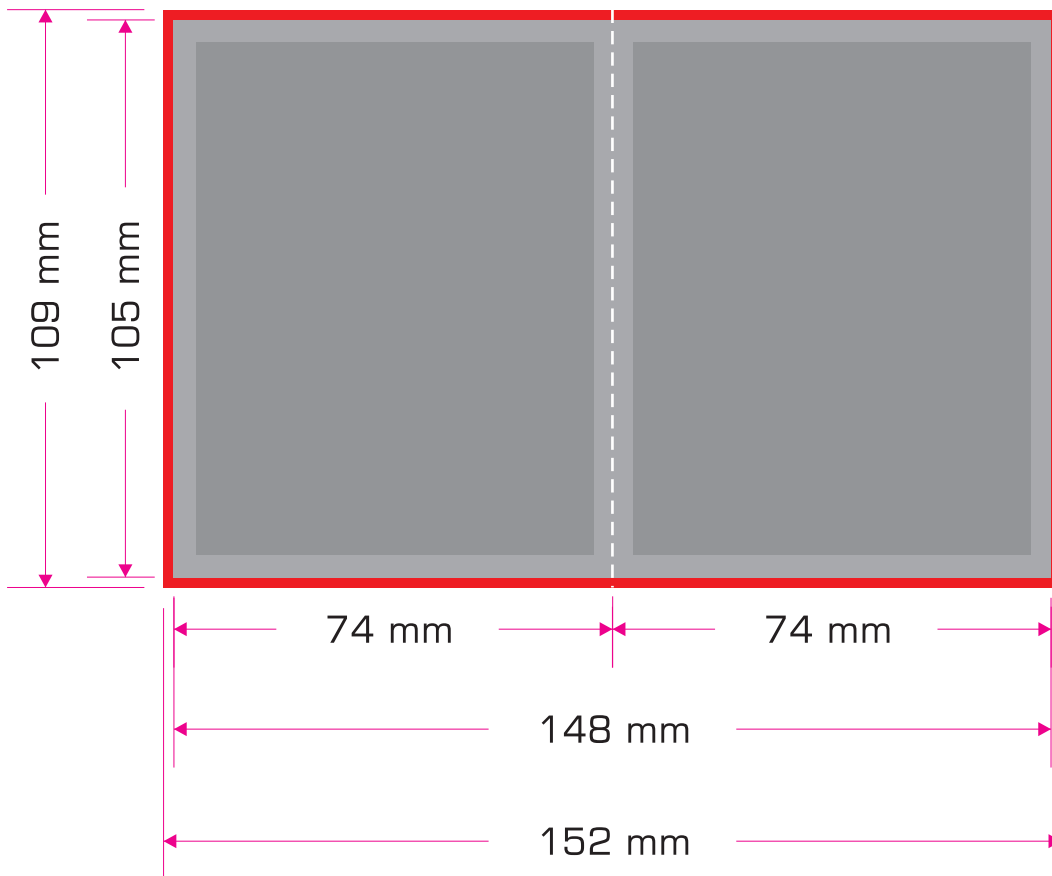
2. PAGE



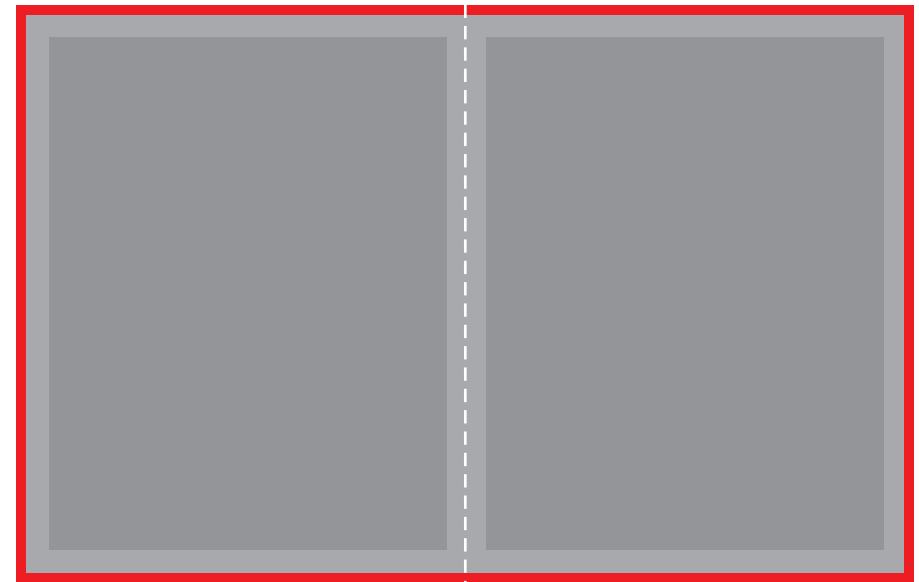
-  bleed (2 mm)
-  format netto
-  text, logo, etc.





# REX·POST\_DUO A7

1. PAGE



2. PAGE

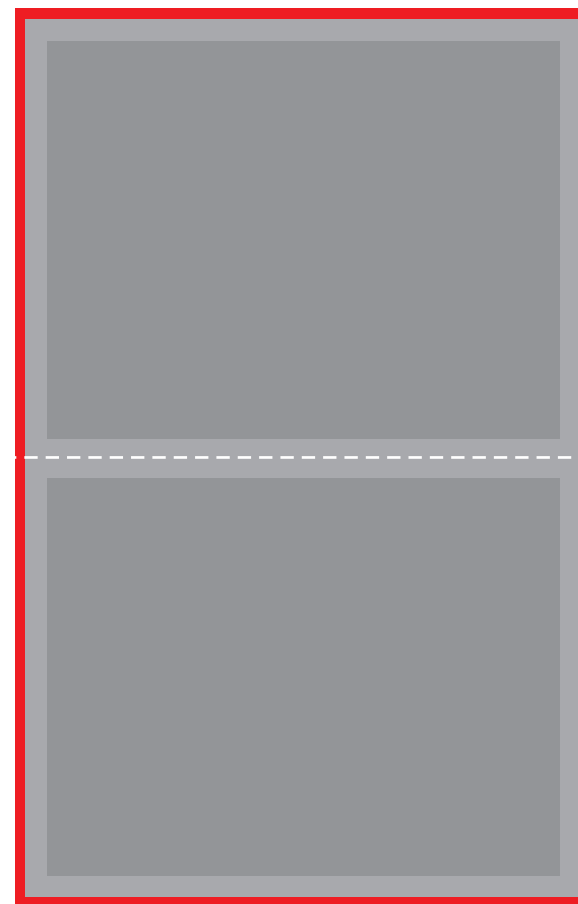
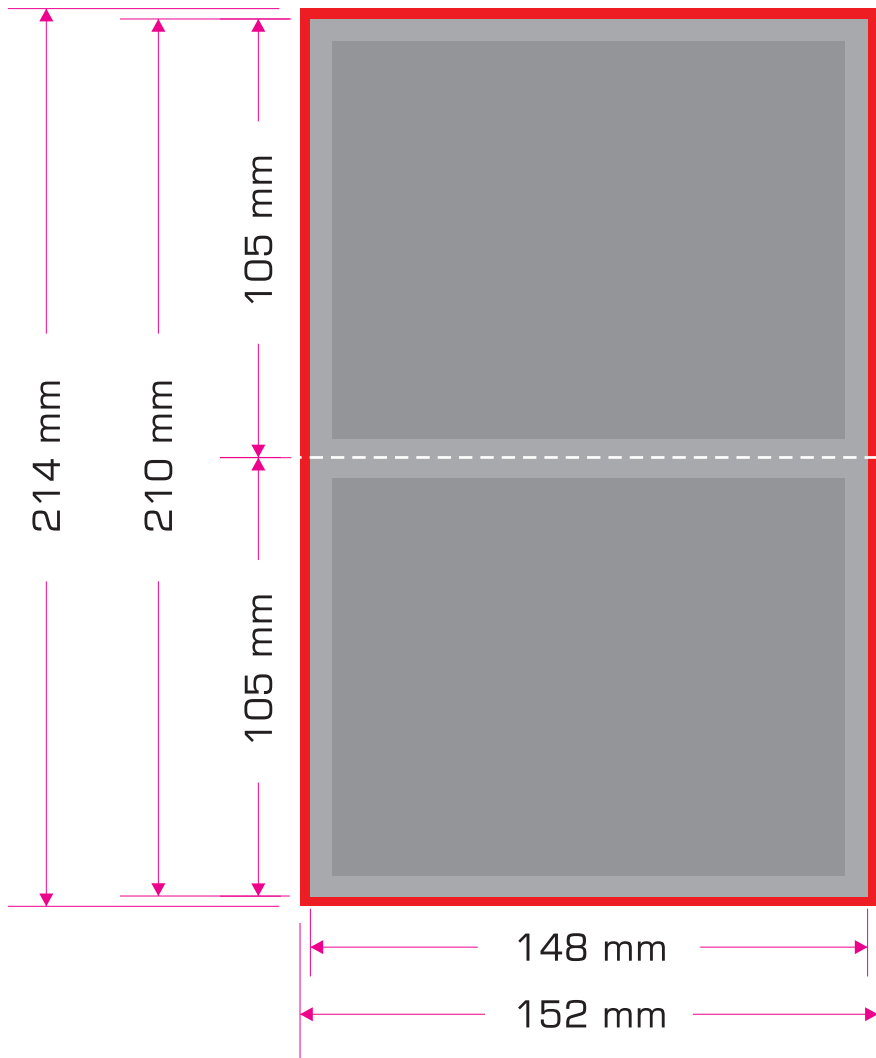






-  bleed (2 mm)
-  format netto
-  text, logo, etc.
-  big

# REX·POST\_DUO A6

1. PAGE

2. PAGE

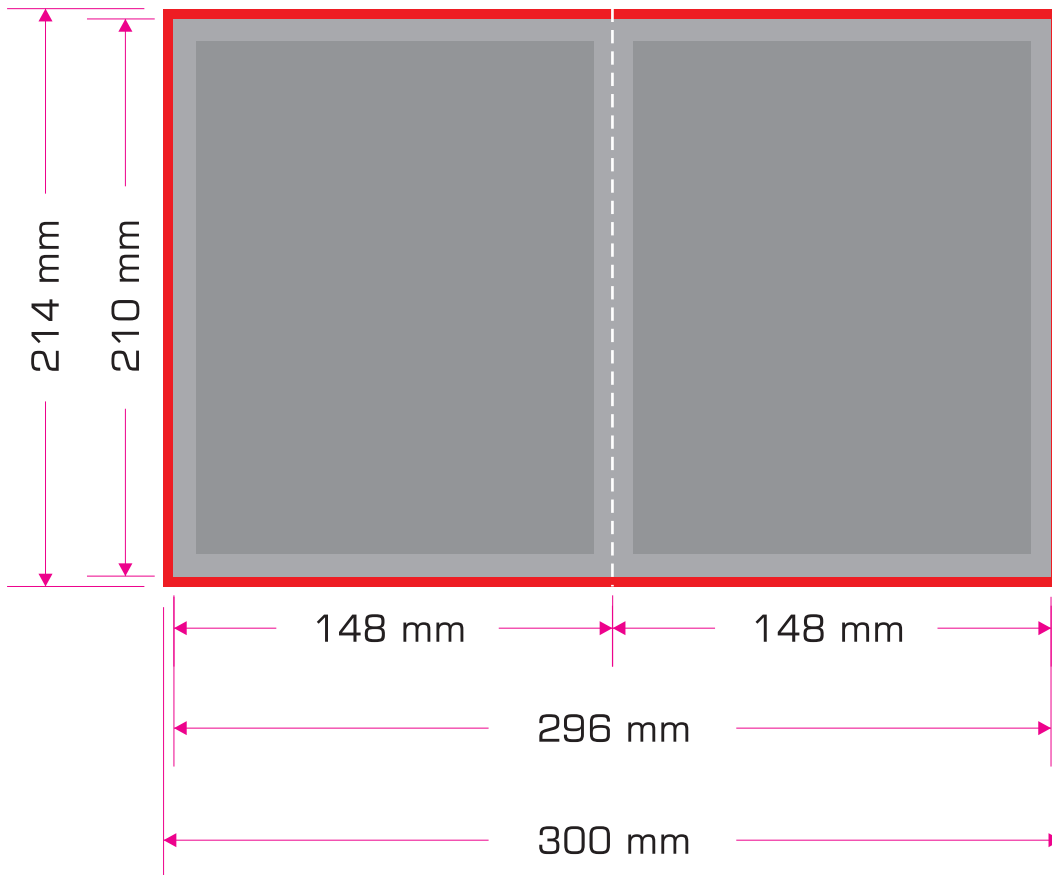


-  bleed (2 mm)
-  format netto
-  text, logo, etc.
-  big

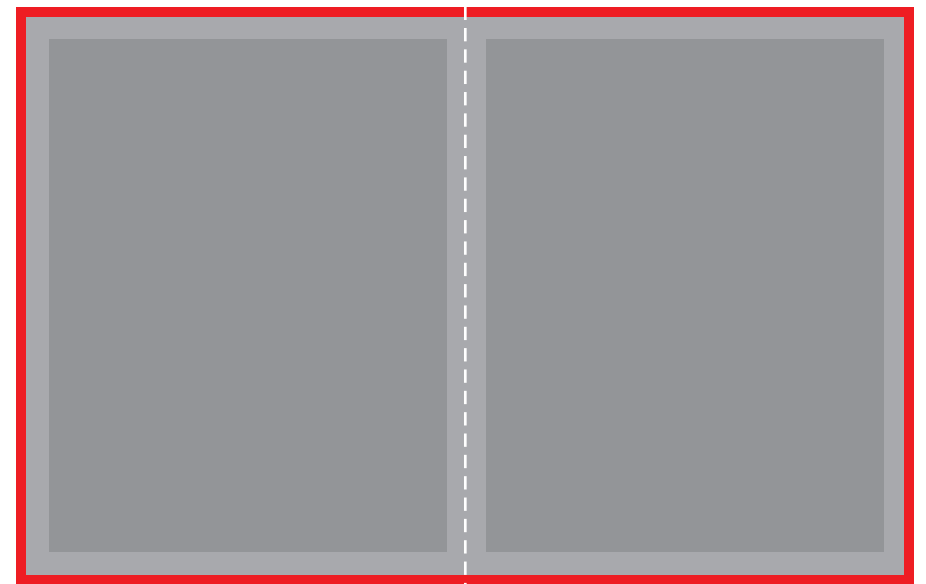






# REX·POST\_DUO A5

1. PAGE



2. PAGE

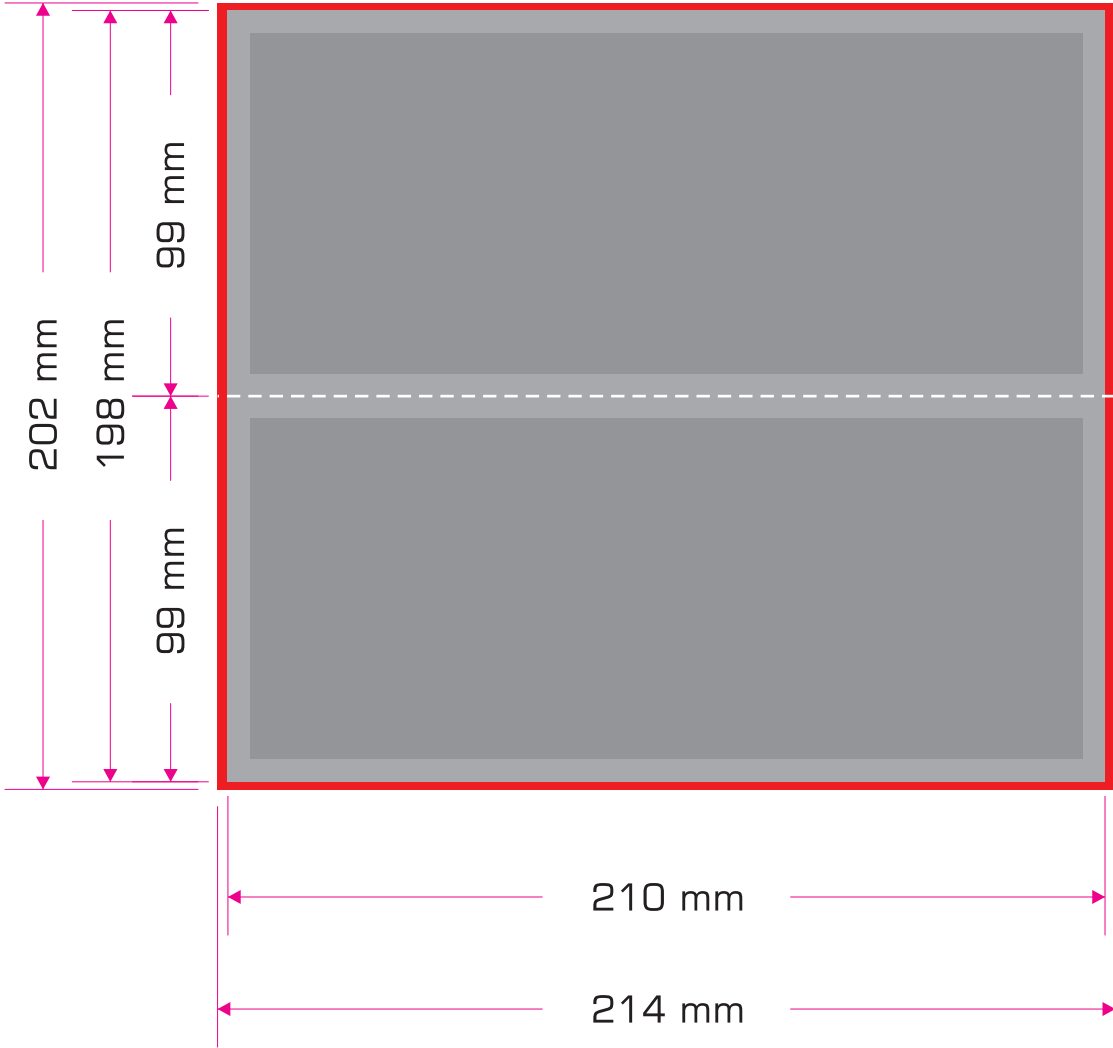





-  bleed (2 mm)
-  format netto
-  text, logo, etc.
-  big

# REX•POST\_DUO 1/3 A4

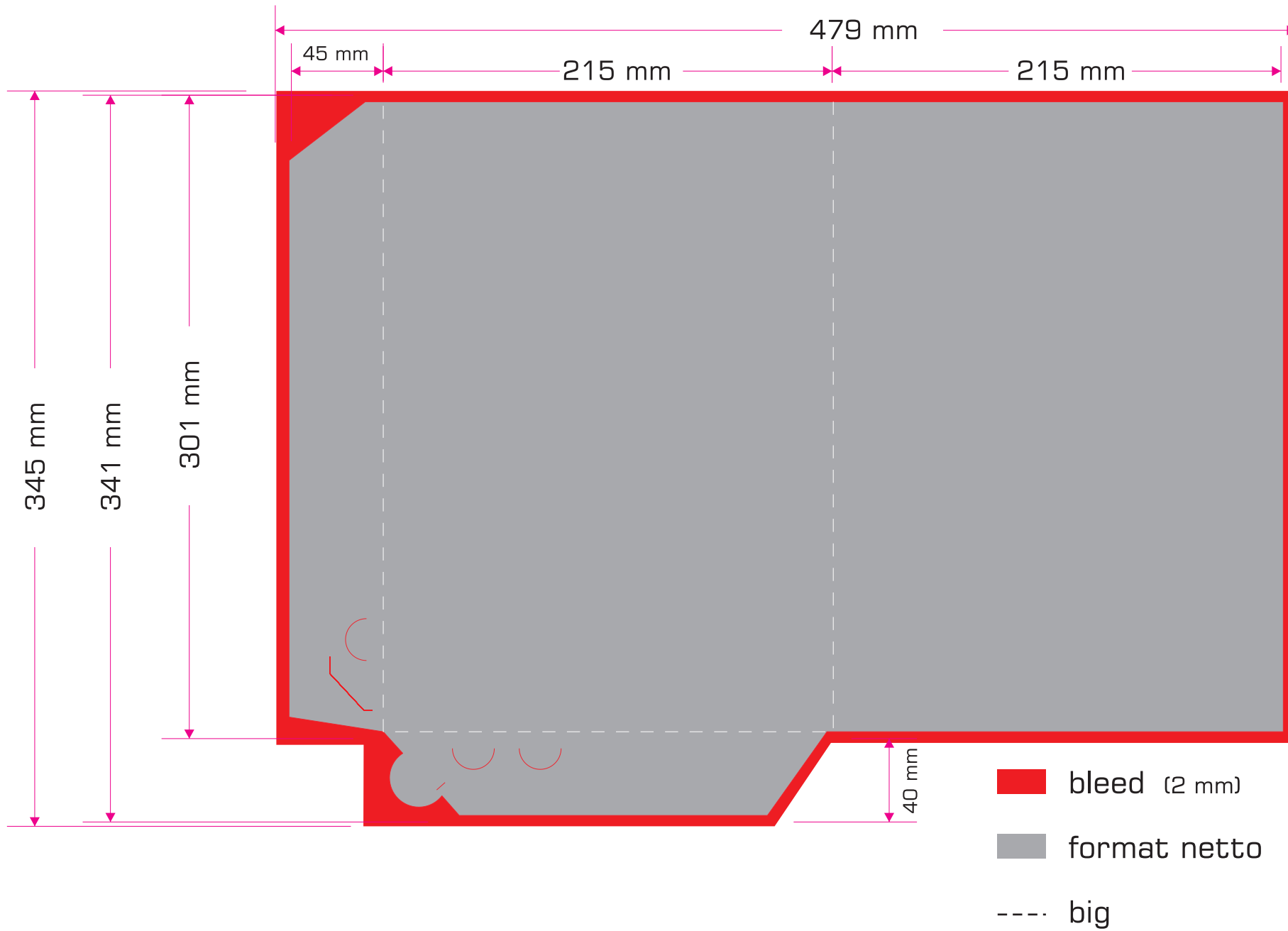
1. PAGE

2. PAGE

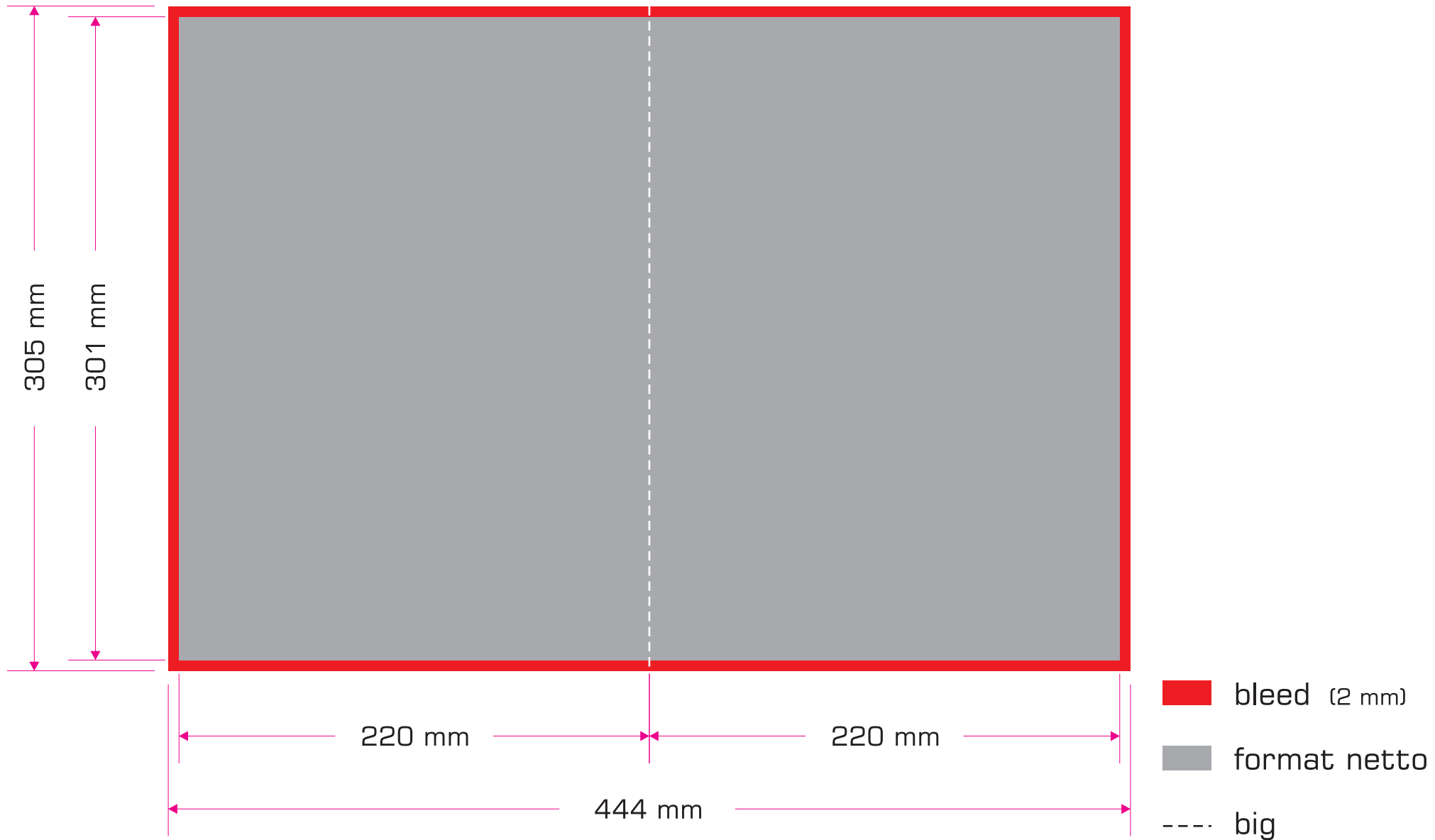


-  bleed (2 mm)
-  format netto
-  text, logo, etc.
-  big

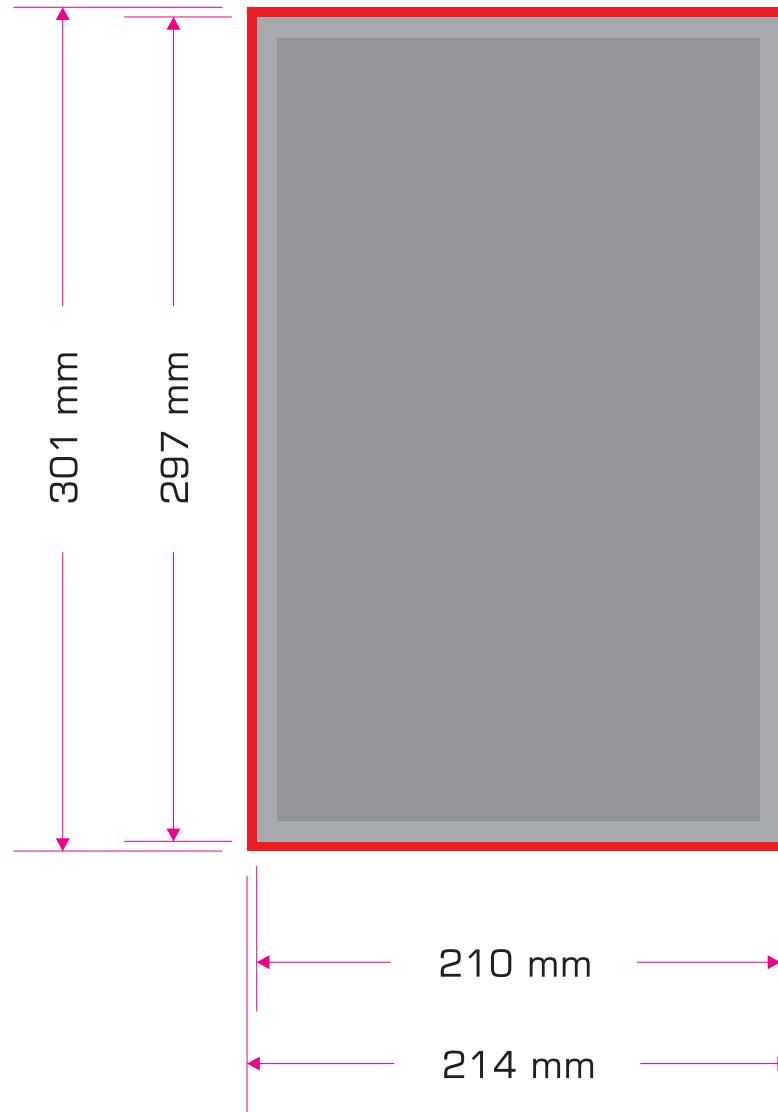
# REX•COVER






# REX·COVER\_SMALL



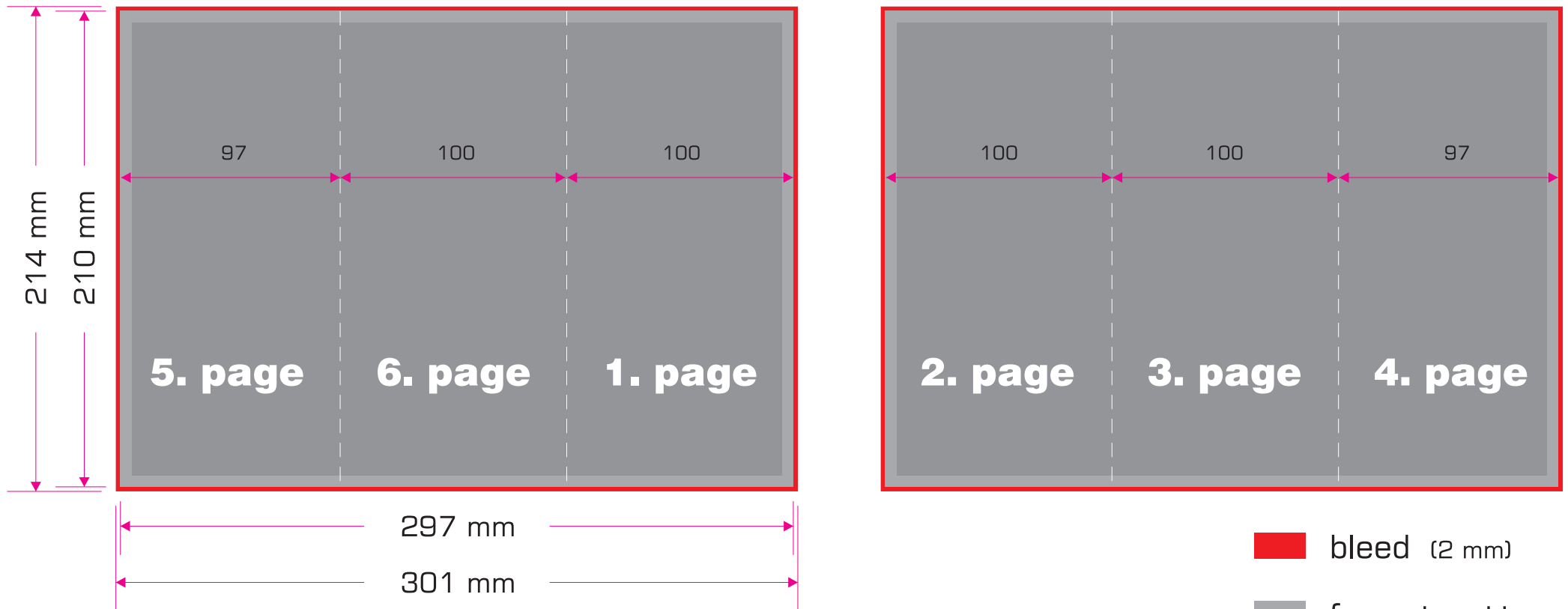
# REX•LETTER






-  bleed (2 mm)
-  format netto
-  text, logo, etc.

# REX•FLYER

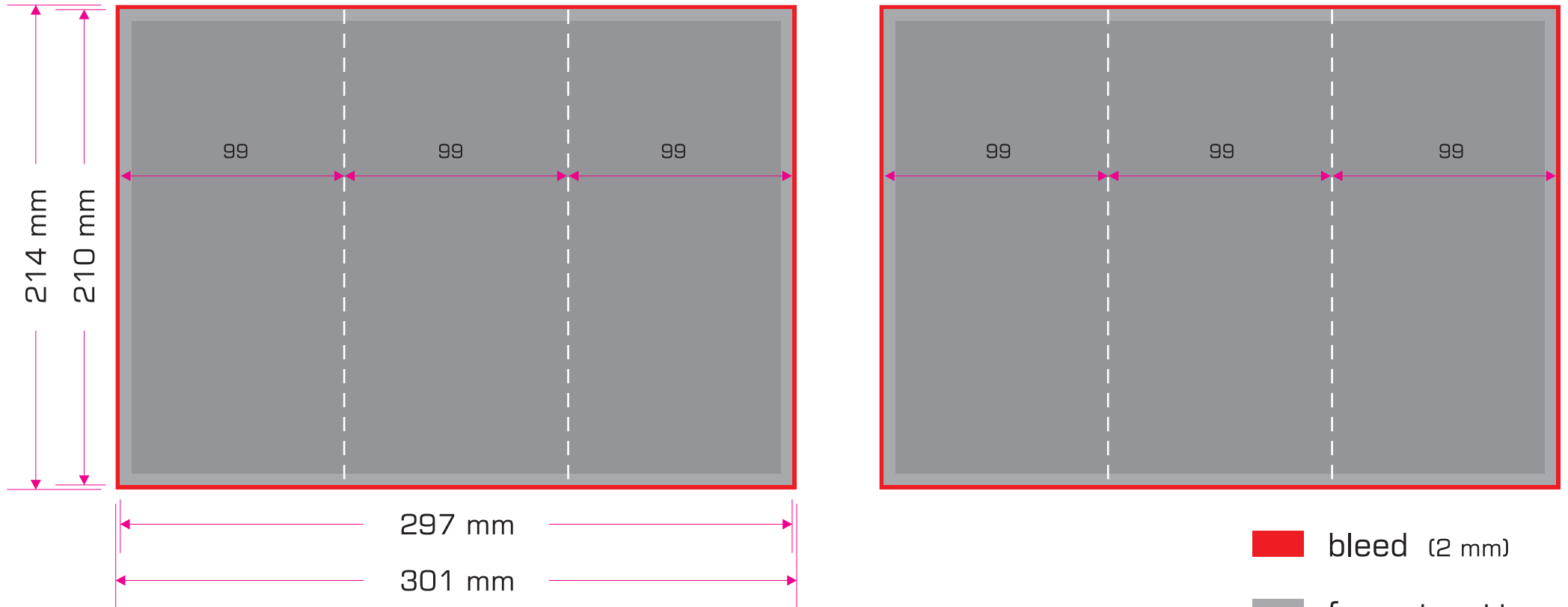
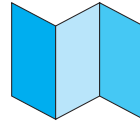
## WICKELFALZ






-  bleed (2 mm)
-  format netto
-  text, logo, etc.

# REX•FLYER

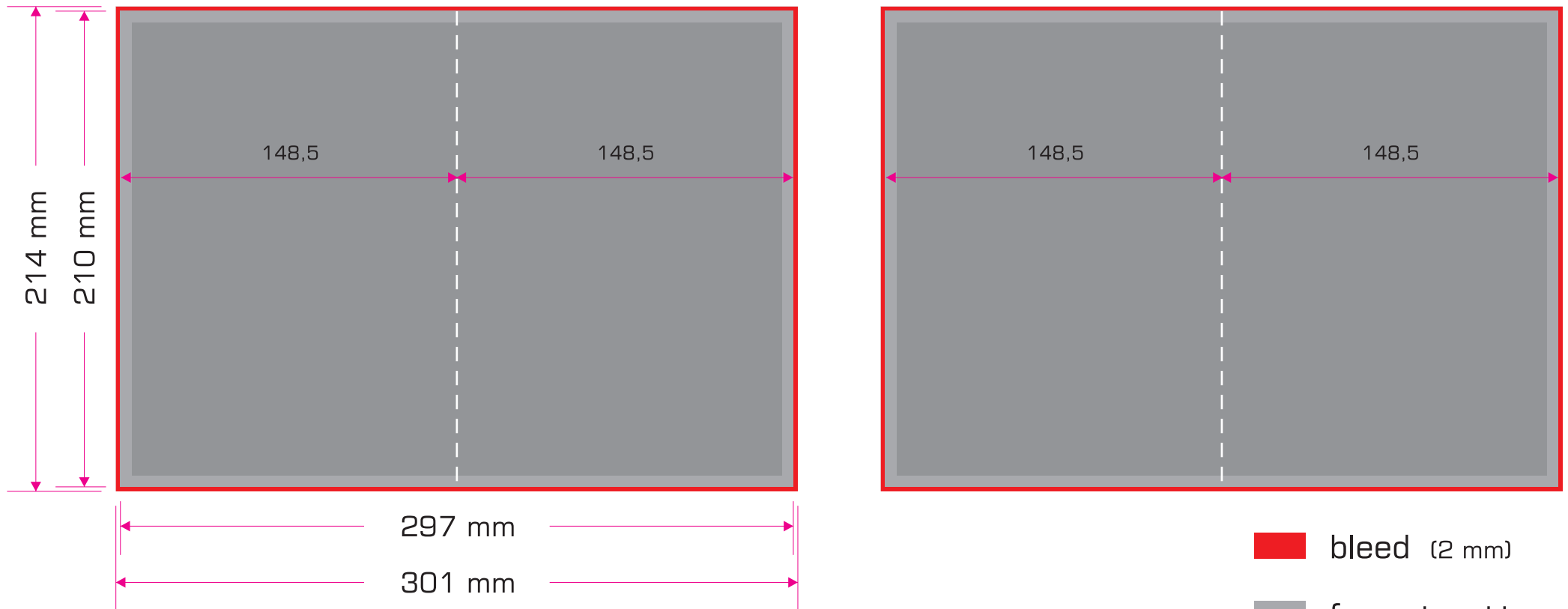
## ZIGZAG






-  bleed (2 mm)
-  format netto
-  text, logo, etc.

# REX•FLYER

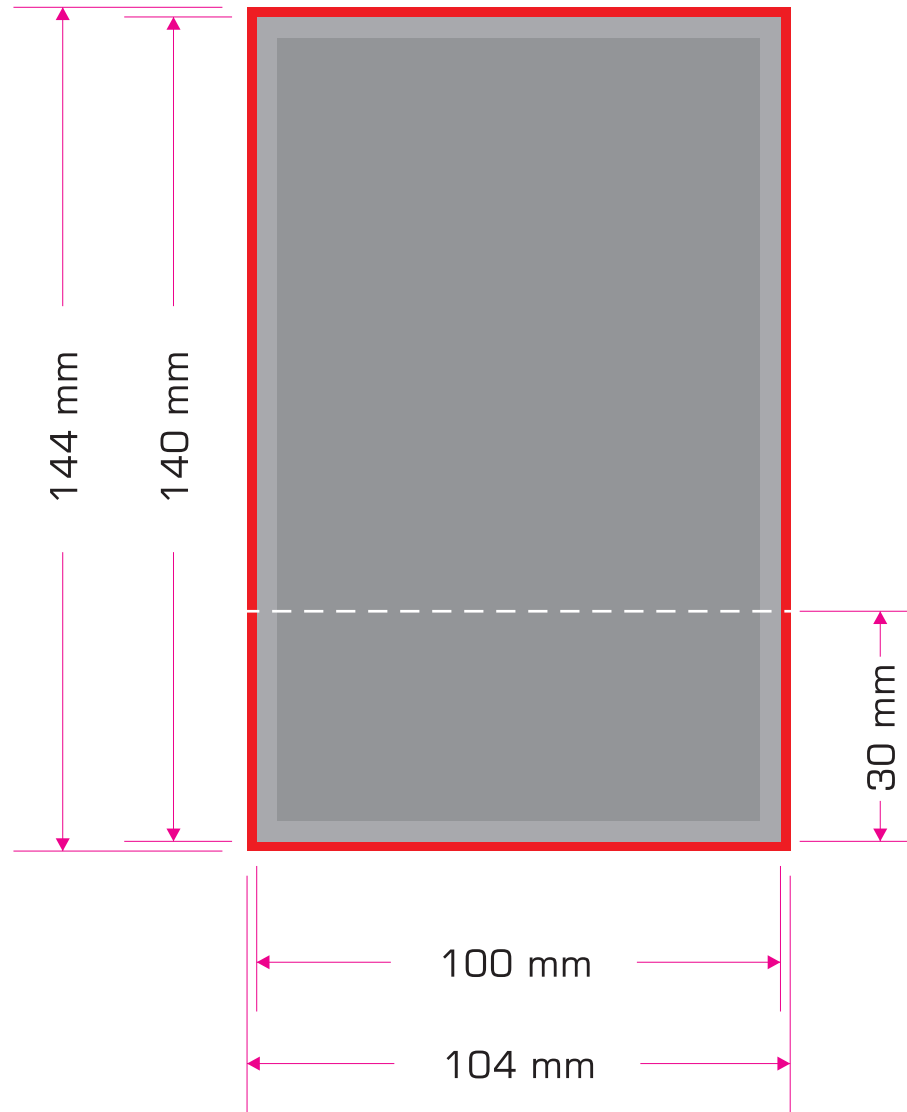
## 1 FALZ






-  bleed (2 mm)
-  format netto
-  text, logo, etc.

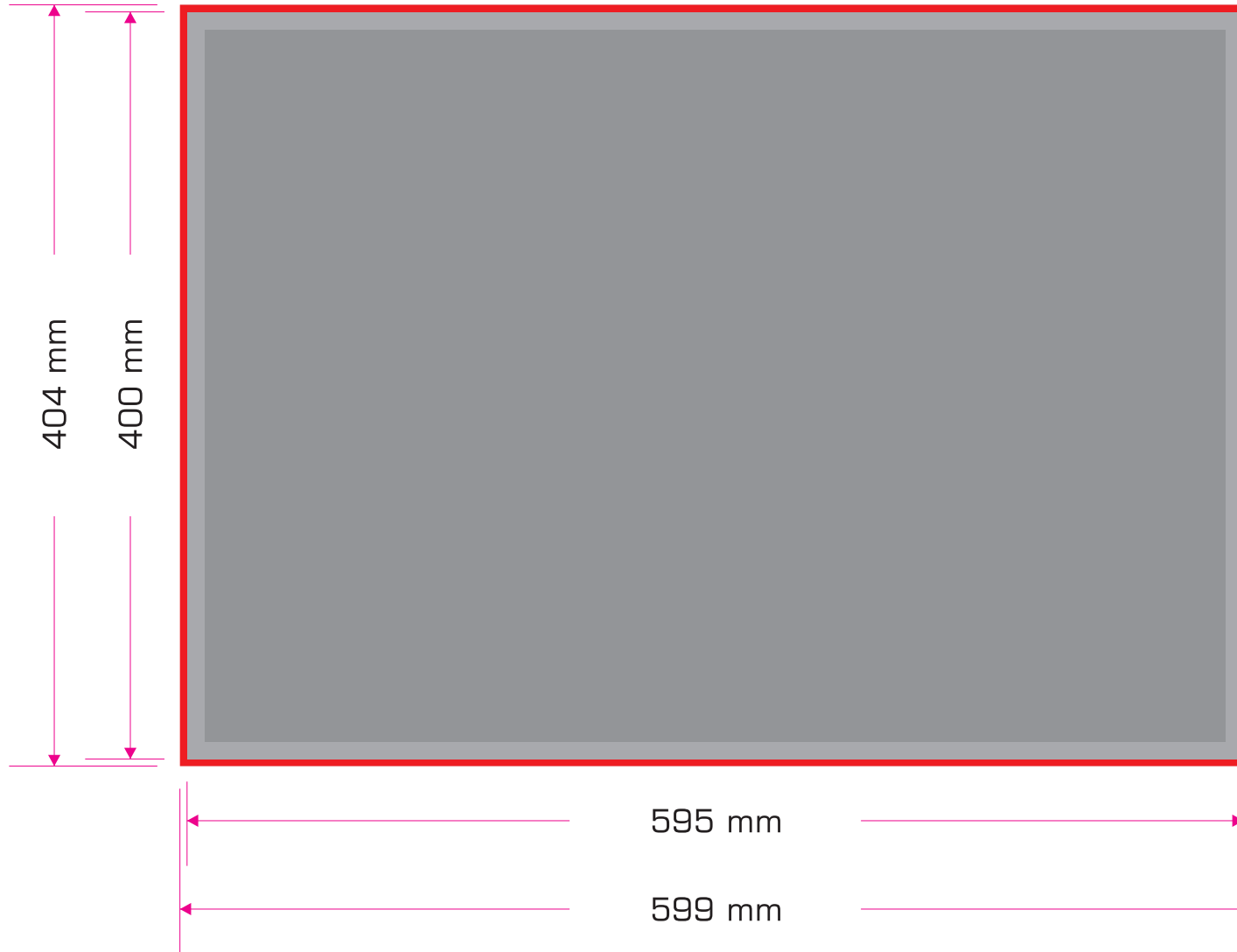


# NOTES R45



-  bleed (2 mm)
-  format netto
-  text, logo, etc.

# REXDESKPAD

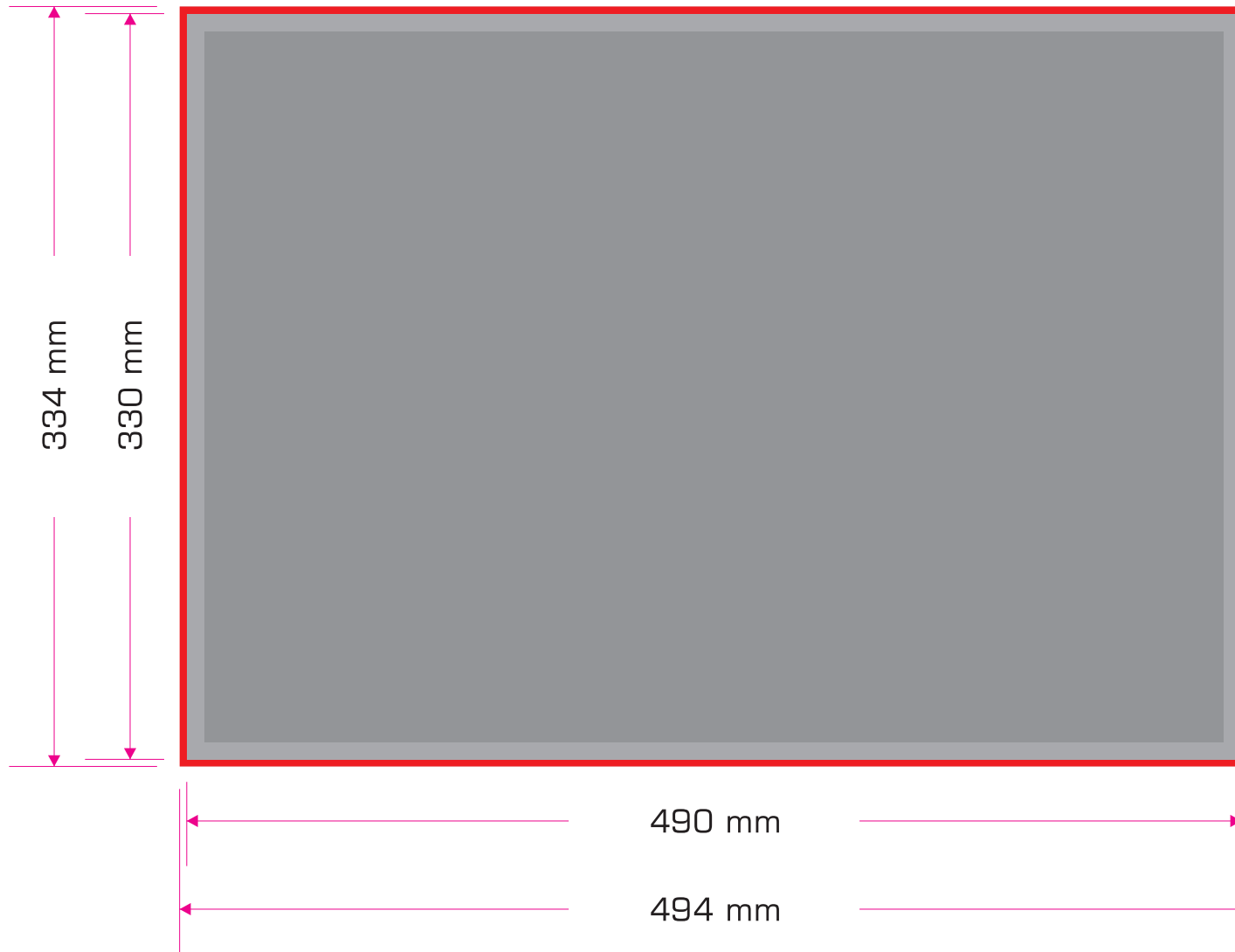


 bleed (2 mm)

 format netto


 text, logo, etc.

# REXDESKPAD\_SMALL



 bleed (2 mm)

 format netto

 text, logo, etc.